

# SALERNO VILLAGE SQUARE SHOPPING CENTER REPLAT

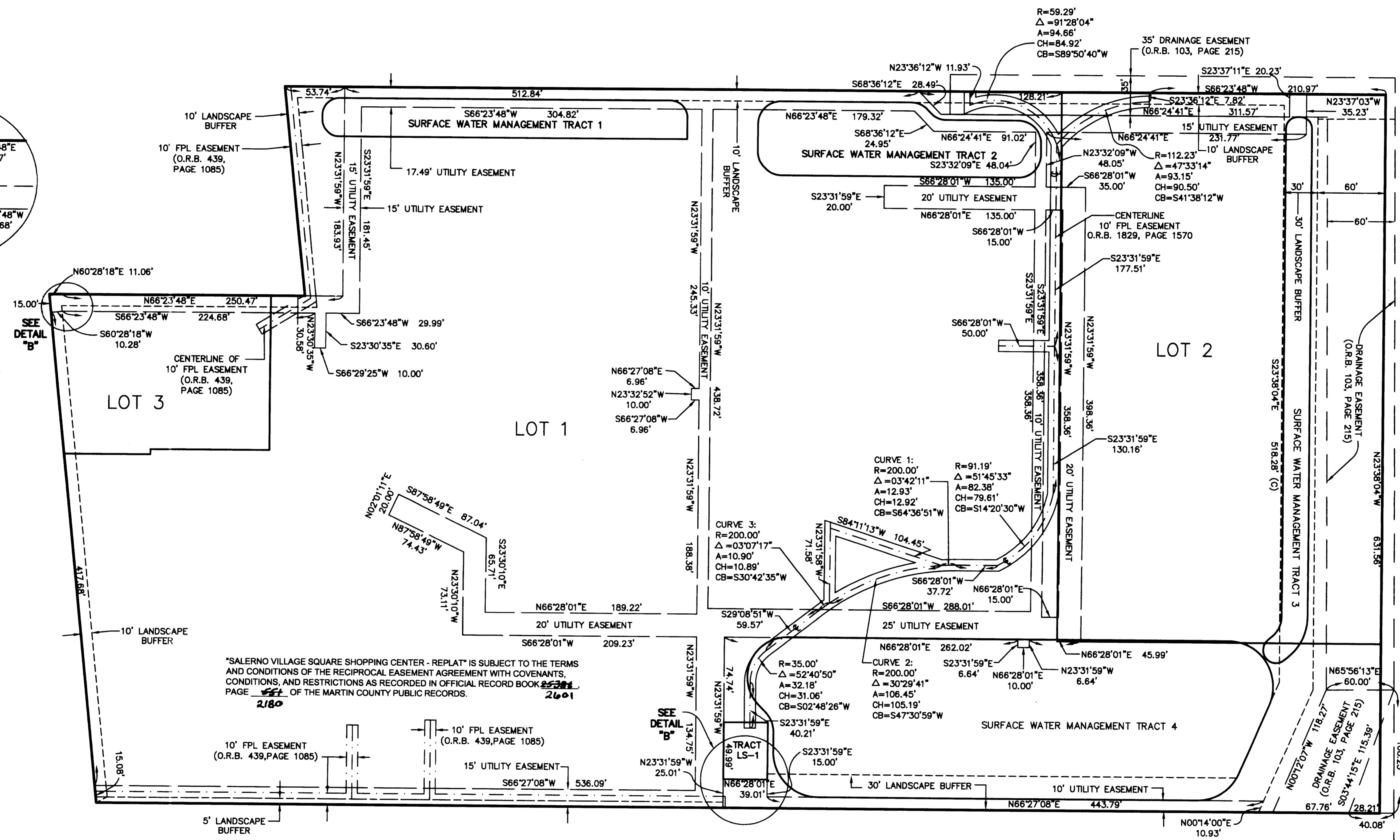
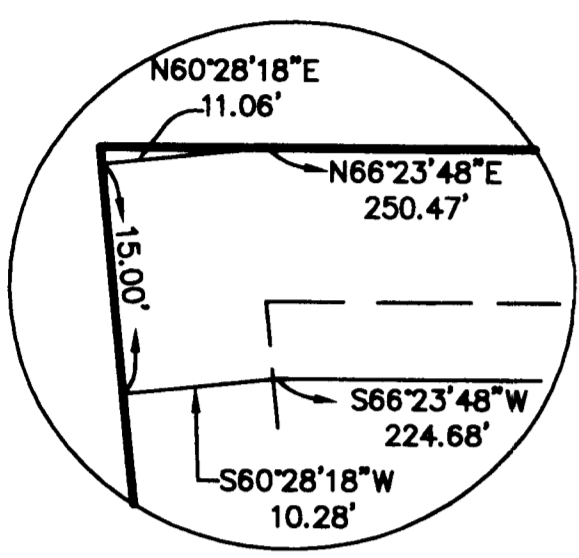
BEING A REPLAT OF PLAT OF SALERNO VILLAGE SQUARE SHOPPING CENTER,  
AS RECORDED IN PLAT BOOK 16, PAGES 56, PUBLIC RECORDS OF MARTIN COUNTY, FLORIDA.  
LYING IN A PORTION OF SECTION 18, TOWNSHIP 37 SOUTH, RANGE 41 EAST  
CITY OF STUART, MARTIN COUNTY, FLORIDA



( IN FEET )  
1 inch = 50 ft.

THIS MAP IS INTENDED TO BE DISPLAYED  
AT A SCALE OF 1" = 50' OR SMALLER

**DETAIL "B"**  
NOT TO SCALE

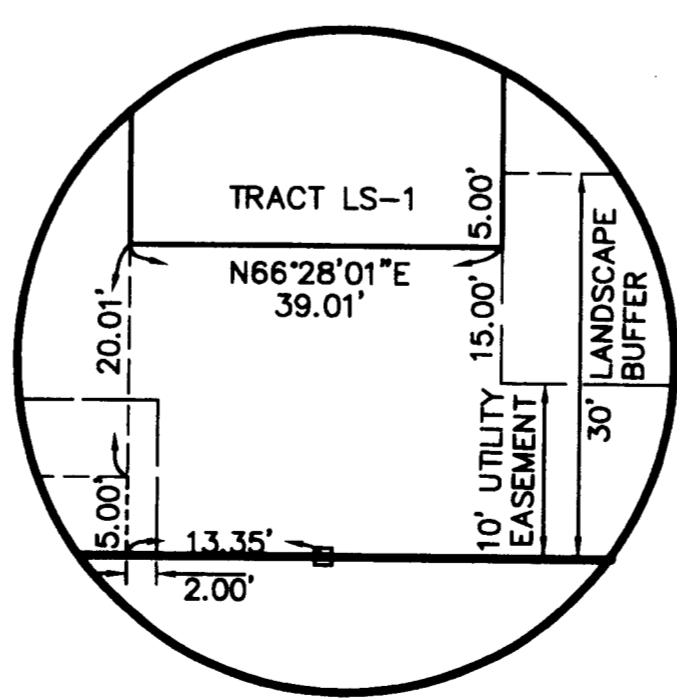


"SALERNO VILLAGE SQUARE SHOPPING CENTER - REPLAT" IS SUBJECT TO THE TERMS AND CONDITIONS OF THE RECIPROCAL EASEMENT AGREEMENT WITH COVENANTS, CONDITIONS, AND RESTRICTIONS AS RECORDED IN OFFICIAL RECORD BOOK 2180 AND 2601 OF THE MARTIN COUNTY PUBLIC RECORDS.

**LEGEND**

- A = ARC LENGTH
- Δ = CENTRAL ANGLE
- CB = CHORD BEARING
- CH = CHORD DISTANCE
- E = EASTING
- F.D.O.T. = FLORIDA DEPARTMENT OF TRANSPORTATION
- FPL = FLORIDA POWER & LIGHT
- INC. = INCORPORATED
- LB = LICENSED BUSINESS
- LS-1 = LIFT STATION TRACT
- N = NORTHING
- O.R.B. = OFFICIAL RECORDS BOOK
- P.R.M. = PERMANENT REFERENCE MONUMENT
- PSM = PROFESSIONAL SURVEYOR AND MAPPER
- R = RADIUS
- R/W = RIGHT-OF-WAY
- = FOUND 4"x4" CONCRETE MONUMENT WITH 2" ALUMINUM DISK STAMPED "GCY INC LB 4108 PRM PSM 4864"
- = FOUND 1" IRON PIPE AND CAP STAMPED "GCY INC LB 4108"
- = SET 4"x4" CONCRETE MONUMENT WITH BRASS DISK STAMPED "P.R.M. LB 6705" OR "P.R.M. LB 6705 OFFSET"
- ⊙ = SET PK NAIL AND DISK STAMPED "P.R.M. LB 6705"
- = SET 5/8" IRON ROD AND CAP STAMPED "CREECH INC. LB 6705"

**DETAIL "B"**  
NOT TO SCALE



**CREECH ENGINEERS, INC.**  
CIVILIZATION ENGINEERS  
7881 S.W. ELLIPSE WAY, STUART, FL 34997 (772) 283-1413  
BOARD OF PROFESSIONAL ENGINEERS, CERTIFICATE OF AUTHORIZATION NUMBER 6158  
PROFESSIONAL SURVEYORS AND MAPPERS, LICENSED CERTIFICATE NO. LB-000700